

**FINAL  
OPERATIONAL RANGE ASSESSMENT PROGRAM  
PHASE I QUALITATIVE ASSESSMENT REPORT  
JOSEPH BALDWIN LOCAL TRAINING AREA  
NASON, ILLINOIS**

---

DECEMBER 2008

Prepared for:

**UNITED STATES ARMY CORPS OF ENGINEERS, BALTIMORE DISTRICT**  
P.O. Box 1715  
Baltimore, Maryland 21203

and

**UNITED STATES ARMY ENVIRONMENTAL COMMAND**  
Aberdeen Proving Ground, Maryland 21010

Prepared by:

**MALCOLM PIRNIE, INC.**  
701 Town Center Drive  
Suite 600  
Newport News, Virginia 23606



---

## EXECUTIVE SUMMARY

The United States (U.S.) Army is conducting qualitative assessments at operational ranges to meet the requirements of Department of Defense policy and to support the U.S. Army Sustainable Range Program. The operational range qualitative assessment (hereinafter referred to as Phase I Assessment) is the first phase of the U.S. Army Operational Range Assessment Program. This Phase I Assessment evaluates the operational range area at Joseph Baldwin Local Training Area (LTA) to assess whether further investigation is needed to determine if potential munitions constituents of concern (MCOC) are or could be migrating off-range at levels that may pose an unacceptable risk to human health or the environment. In conducting the Phase I Assessment, MCOC sources, potential off-range migration pathways, and potential off-range human and ecological receptors are evaluated as appropriate.

Joseph Baldwin LTA encompasses approximately 69.99 acres in Jefferson County, Illinois, approximately 15 miles south of Mt. Vernon, Illinois. The Joseph Baldwin LTA property is privately owned. The Illinois Army National Guard (ILARNG) entered into a lease agreement with the landowner in 2000 to utilize the property as a local training area. According to the Army Range Inventory Database-Geodatabase (2006), the site is a light maneuver/training area and has been used exclusively by the 123rd Field Artillery, ILARNG to conduct no more than one training event per year, consisting of artillery crew drills and bivouac training (e.g., howitzer section training, battery defense training, fire direction control training). Currently, no ILARNG training activities are conducted at Joseph Baldwin LTA; historical munitions use at the site by the ILARNG included small caliber blank munitions.

A review of available records and background data, as well as interviews with ILARNG personnel, indicates that training activities at Joseph Baldwin LTA do not involve, and historically have not involved, the use of military munitions except for small caliber blanks. Small caliber blanks contain no projectile and are not considered to be a source of MCOC. Potential sources of MCOC were not identified at Joseph Baldwin LTA; therefore, potential off-range migration pathways and potential off-range human and ecological receptors were not evaluated. The one operational range at Joseph Baldwin LTA is categorized as Unlikely.

Installations with operational ranges where no munitions or only small caliber blanks have been utilized are categorized as Unlikely. That is, based on a review of available information, there is sufficient evidence to show that due to the lack of munitions use there are no known releases or source-receptor interactions that could present an unacceptable risk to human health or the environment. Ranges categorized as Unlikely are required to be re-evaluated at least every five years. Re-evaluation may occur sooner if significant changes (e.g., change in range operations or site conditions, regulatory changes) occur that affect determinations made during this Phase I Assessment. **Table ES-1** summarizes the Phase I Assessment findings.

**Table ES-1: Summary of Findings and Conclusions for Joseph Baldwin LTA**

Category	Total Number of Ranges and Acreage	Source(s)	Pathway(s)	Human and Ecological Receptors	Conclusions
Unlikely	One operational range; 69.99 acres	No source—no current or historical use of live-fire military munitions	Not evaluated (no source identified)		Re-evaluate during the five-year review.

---

## ABBREVIATIONS/ACRONYMS

ARID-GEO	Army Range Inventory Database-Geodatabase
CSM	Conceptual Site Model
DoD	Department of Defense
GIS	Geographic Information System
ILARNG	Illinois Army National Guard
JFHQ-IL	Joint Force Headquarters-Illinois
LTA	Local Training Area
MCOC	Munitions Constituents of Concern
ORAP	Operational Range Assessment Program
U.S.	United States
USACE	United States Army Corps of Engineers

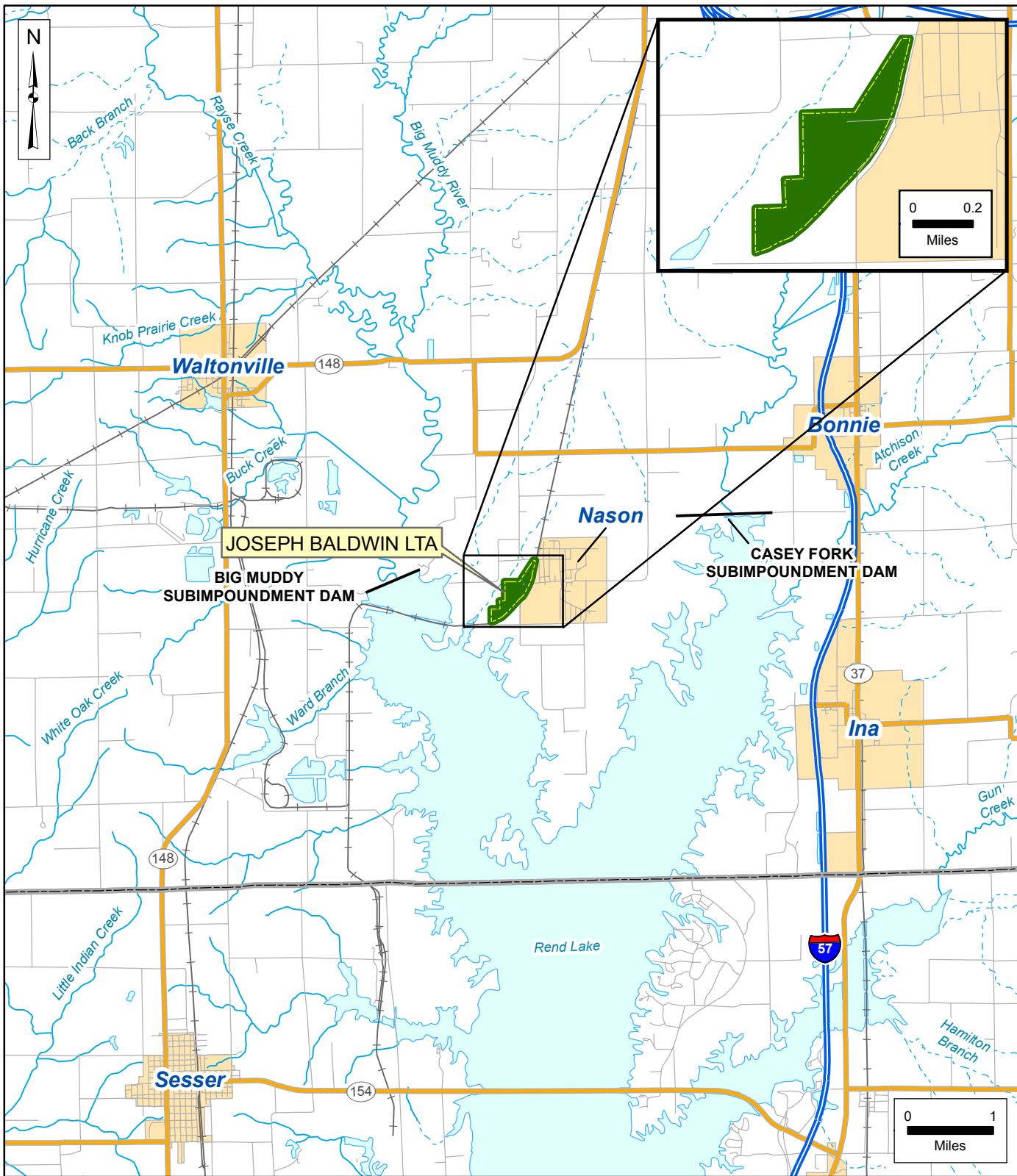


**MALCOLM  
PIRNIÉ**

**Operational Range Assessment Program  
Phase I Qualitative Assessment  
Joseph Baldwin LTA, IL**



**Figure 2-1  
Joseph Baldwin LTA Location  
and Operational Range Area**



**Installation**

- Installation Boundary
- Operational Area

**Hydrology**

- Perennial Stream
- Intermittent Stream
- Water Body
- Dam

**Transportation**

- Interstate
- Highway
- Major Road
- Local Road
- Railroad

**Administrative**

- Urbanized Area
- County Boundary

Data Sources:  
AEC, ARID-GEO, 2006  
ESRI, StreetMap USA, 2005

Date: ..... December 2008  
Prepared By: ..... Malcolm Pirnie, Inc.  
Prepared For: ..... U.S. Army  
Contract: ..... W912DR-05-D-0004