

# **DERP Forum**

**Strengthening Relationships with our Regulatory Partners**

---

**St. Louis, Missouri**

**May 8-9, 2019**



# **Navy PFAS Installation Restoration Update and Success Story**

**Kim Parker Brown, M.S., P.E., NAVFAC HQ**

**DERP FORUM**

STRENGTHENING RELATIONSHIPS WITH OUR REGULATORY PARTNERS

May 7-9, 2019 St. Louis, MO

#DERPForum

# DON PFAS Comprehensive Strategy

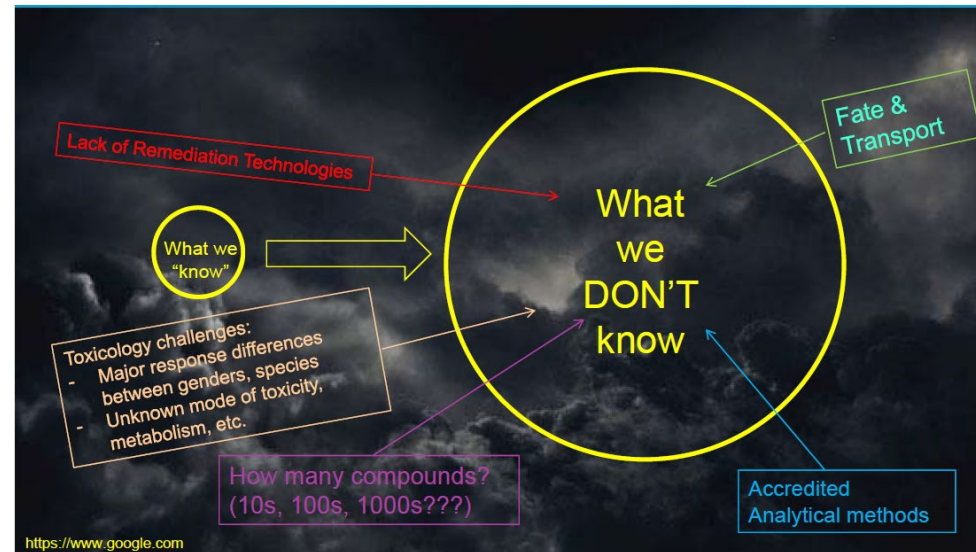


## Priority Areas:

- Drinking water on DON active and BRAC installations
- Impacted public and private drinking water off installation
- DON cleanup program
- Aqueous Film Forming Foam (AFFF)
- Groundwater by conducting basewide PA/SI and continue CERCLA process
- 142 DON active and BRAC installations
- **RISK COMMUNICATION throughout the process is critical.**



## Future Challenges:



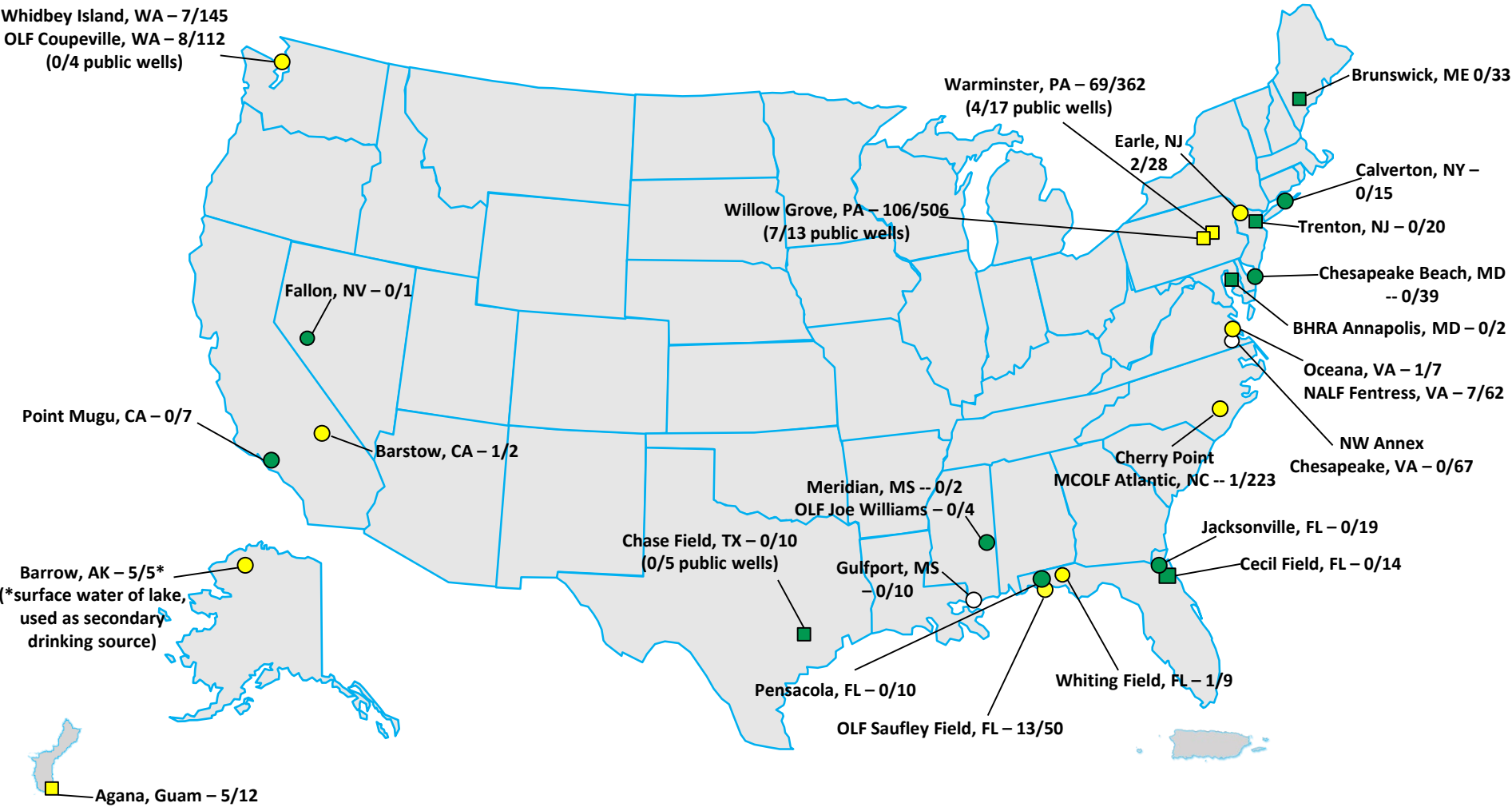
<http://www.secnav.navy.mil/eie/pages/pfc-pfas.aspx>



# DON PFOA/PFOS Off-Installation Drinking Water Sampling Locations



**No one is drinking water above the EPA Lifetime Health Advisory due to DoD activities**



<b>BRAC Installation Sites</b>	Yellow – Above LHA
	Green – Below LHA
	White – Results Pending

<b>ERN Active Installation Sites</b>	Yellow – Above LHA
	Green – Below LHA
	White – Results Pending

# of Wells Above LHA / Total # of Wells Sampled
---

# Navy Success Story



- **Background**

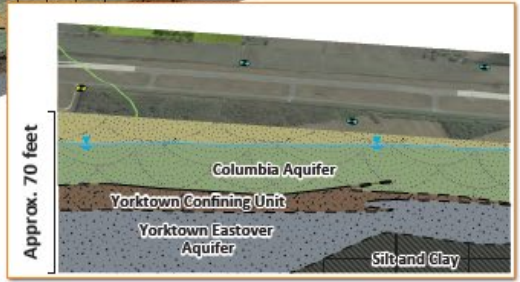
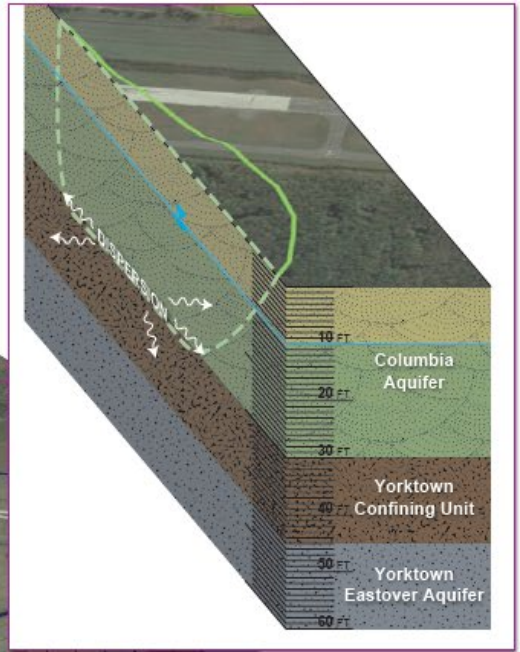
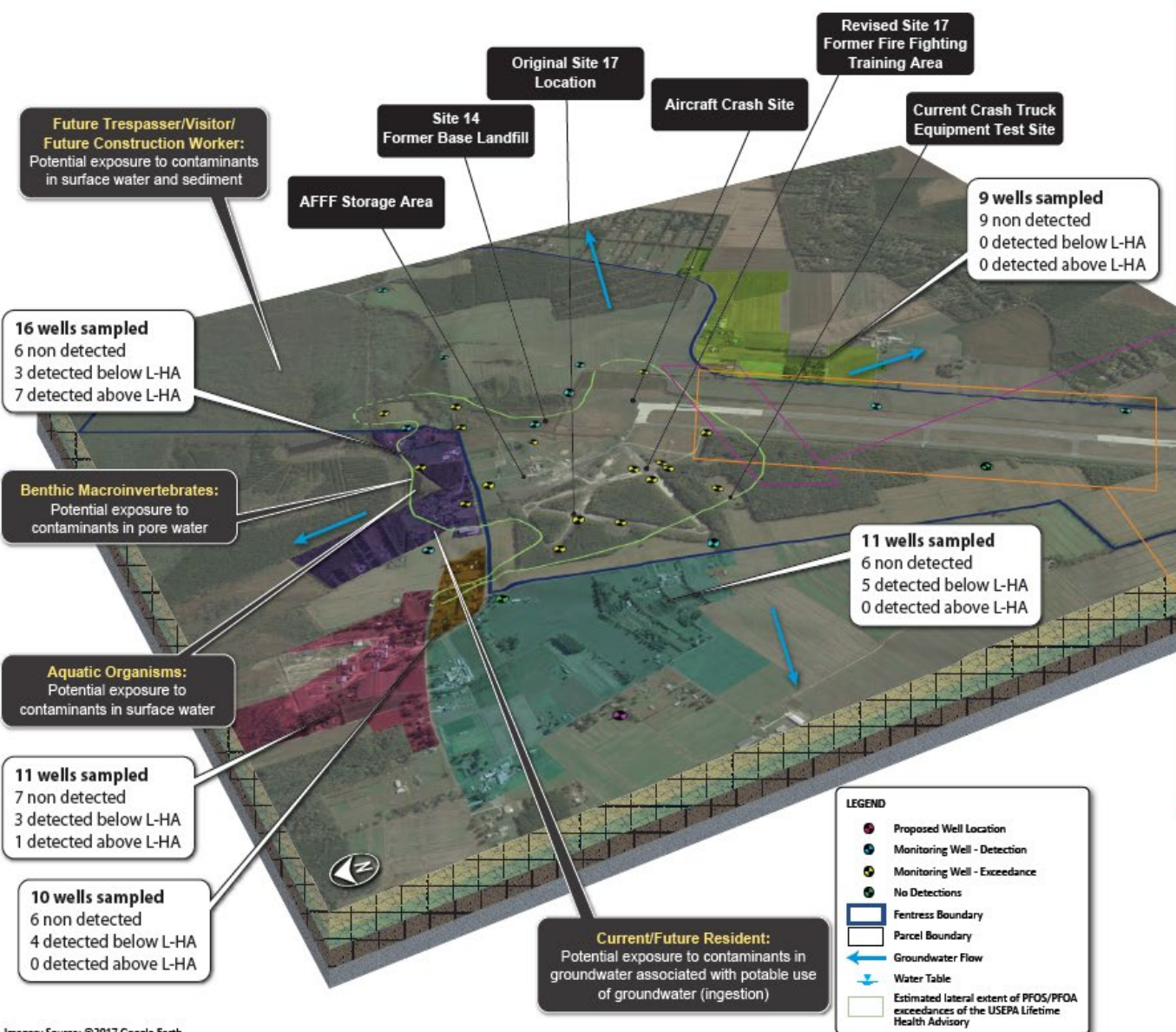
- Rural Naval Auxiliary Landing Field Fentress (NALF Fentress)
- Staffed by 40 military personnel
- Drinking water groundwater supply wells provide water (potable and non-potable) on-base
- Wastewater treatment through a series of settling lagoons and used for spray irrigation on-site
- Surrounding residents use private wells for potable and non-potable purposes

- **Initial Investigation**

- 43 groundwater samples
- 63 drinking water samples
- 7 soil samples



# Overall Site Investigation Findings



**LEGEND**

- Proposed Well Location
- Monitoring Well - Detection
- Monitoring Well - Exceedance
- No Detections
- Fentress Boundary
- Parcel Boundary
- Groundwater Flow
- Water Table
- Estimated lateral extent of PFOS/PFOA exceedances of the USEPA Lifetime Health Advisory

**Figure 1**  
**Conceptual Site Model**  
 Basewide Perfluorinated Compound Investigation  
 Sampling and Analysis Plan Addendum 1  
 NALF Fentress, Chesapeake, Virginia

# Response Actions



- **Rapid Response Action:**
  - Water filling station established during off-base groundwater sampling
  - Bottled water provided immediately upon receipt of results
- **Technology/Treatment On-going:**
  - Drinking water systems on- and off-base using GAC
- **Long-term Actions:**
  - Connect community to local water distribution system
  - Technology performance monitoring
  - Investigation in 2019
- **Risk Communication is Critical**
  - Open house public meetings
  - Follow-up meeting with results



On base GAC treatment

# Contacts and Questions



## Points of Contact

**NAVFAC HQ:** Kim Parker Brown

– kim.brown@navy.mil

## Questions ?